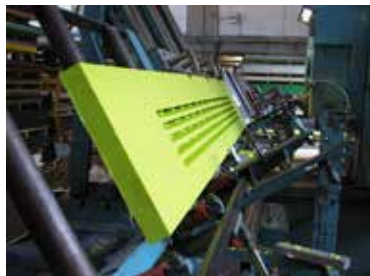


Pressed sheets from our own production for processing into machine components on a computer-guided production line; mixed special quality materials for specific applications, made to any custom size; flexibility with small batch production capability, custom made to customers' drawings, models and samples, using our own or other semi finished products; possibility of using reprocessed material; own development and strong technical support to assist and give customer advice.



• Pressed PE and PP sheets:

- Standard program
- Special program
- Compounds

• Machine components:

• For the food processing industry and industrial packaging:

- Slide elements
- Filling and bottling elements
- Cutting and chopping boards
- Gastronomy

• For mechanical engineering:

- Mechanical parts
- Paper industry

• For the chemical industry:

- Filter plates, pumps and armatures

• Mining and bulk material transportation:

- Lining of silos and bunkers
- Chutes and runways
- Transport devices for bulk material

• Sports equipment:

- Artificial floor for ice skating rinks
- Dashboards and enclosures for ice skating rinks
- Water fitness equipment

• Special programme:

- Sieves for sterilization in autoclaves
- Protective linings

PRESSED SHEETS



colours:

Standard:	Additional colours:			
Natural	White	Red-brown	Marble	
Black	Yellow	Grey	Black marble	
Green	Melon	Blue		
	Red	paper-sol		

Additional colours are available upon request.

• Pressed sheets:

- Standard programme
- Special programme
- Compounds

- Materials

- Standard: PE 1000, PE 500, PE 300, PP
- Special: PE 9000, AST, ELC, UV, FREX, Oil Filled, MoS₂, ULA, CER, DS
- Compounds: PPH HS white (medical grade)
PPH BaSO₄ (galvanic industry)
PP special colours & grades
PE special grades
(AST, flame retardant)

Standard thicknesses of materials

Thickness 10 - 140 mm	PE 1000	10-140
	PE 500	10-120
	PE 300	10-120
	PP	10-120

Standard formats:

Width: 1020, 1220 mm

Length: 6100, 3030, 2020 mm

Other dimensions are available upon request.

KOTERM® PE1000 (PE HMW)

Ultra high molecular weight polyethylene

Description:

Molecular weight greater than 5,000,000 g/mol

- *Excellent resistance to wearing and abrasion*
- *High impact strength even at temperatures down to -200 °C*
- *Highly resistant to chemicals and corrosion*
- *Small coefficient of friction*
- *Does not absorb moisture*
- *Possesses very good processing properties*
- *Very good electric specific resistance and dielectric strength*
- *High capacity of preventing agglutination of materials*
- *Lowers noise levels*
- *Low coefficient of friction*
- *High resistance to γ radiation*
- *Self-lubricating*
- *Physiologically innocuous (majority of materials comply with FDA standards for use in direct contact with foods)*



• **Pressed sheets:**

- **Standard programme**
- **Special programme**
- **Compounds**

Koterm PE 1000

Koterm PE 500

Koterm PE 300

Koterm PP

Areas of use:

Transport applications

- *Canning and bottling equipment*
- *Industrial packaging*
- *Food processing industry*

Paper industry

Mechanical Engineering

- *Chemical industry*
- *Medicine*
- *Textile industry*
- *Ecology*

Linings for devices and transport facilities

KOTERM® PE500 (PE HMW)
High-molecular weight polyethylene

Description:

Molecular weight of 500,000 g/mol

- Physiologically innocuous (in compliance with FDA standards)
- Easy cleaning
- Highly resistant to notching
- Highly resistant to chemicals and corrosion
- Does not absorb moisture
- Good impact resistance
- Possesses very good processing properties
- Low coefficient of friction
- Very good electric specific resistance and dielectric strength

Areas of use:

Food processing industry
 Chemical industry



• **Pressed sheets:**

- Standard programme
- Special programme
- Compounds

Koterm PE 1000
 Koterm PE 500
 Koterm PE 300
 Koterm PP



KOTERM® PE300 (PE HD)

High density polyethylene

Description:

Molecular weight of 300,000 g/mol

- *Highly resistant to chemicals and corrosion*
- *Does not absorb moisture*
- *Good impact strength and yield point*
- *Possesses good processing properties*
- *Very good electric specific resistance and dielectric strength*
- *Physiologically innocuous (in compliance with FDA standards)*

Examples of use:

- *Basins, reservoirs and containers*
- *Kitchen cutting boards*
- *Linings for filtering areas, containers, gutters at lower burdens*
- *Pump parts and valves*
- *Interior panels*
- *Lids and dividers*
- *Protective linings (hockey rinks, cooling chambers)*
- *Playground equipment*
- *Combs*

Areas of use:

- Food processing industry
- Chemical industry
- Maritime



• Pressed sheets:

- Standard programme
- Special programme
- Compounds

Koterm PE 1000

Koterm PE 500

Koterm PE 300

Koterm PP

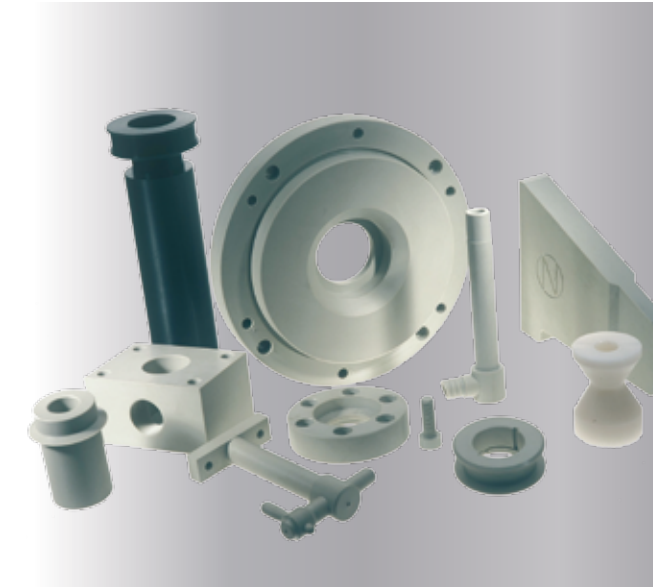
KOTERM® PP (PP)

Description:

- Highly resistant to chemicals and corrosion
- Good welding properties
- Possesses very good processing properties
- Does not absorb moisture
- Very good electric specific resistance and dielectric strength
- Physiologically innocuous (in compliance with FDA standards)

Examples of use:

- Basins, reservoirs and containers
- Galvanised drums
- Processing equipment
- Pump parts and valves
- Filtering plates
- Ventilators
- Cutting boards



• Pressed sheets:

- Standard programme
- Special programme
- Compounds

Koterm PE 1000
Koterm PE 500
Koterm PE 300
Koterm PP

SPECIAL PROGRAMM

• **Pressed sheets:**

- Standard programme
- Special programme
- Compounds

- KOTERM PE 9000
- KOTERM ULA, CER
- KOTERM PE 1000 UV
- KOTERM AST
- KOTERM MoS₂
- KOTERM OIL filled
- KOTERM DS
- KOTERM DS Super
- KOTERM SUPER HOT
- KOTERM FREX
- KOTERM ELC

COMPOUNDS

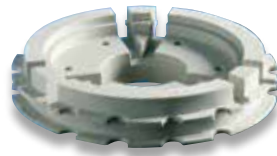
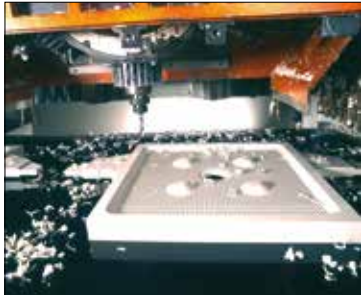


- **Pressed sheets:**

- Standard programme
- Special programme
- **Compounds**

- *PP special grades & colours (AST, ELC flame retardant)*
- *PE special grades & colours*
- *PP BaSO₄*
- *PPH HS White ((for medicine))*

MACHINE COMPONENTS



• Machine components:

• For the food processing industry and industrial packaging:

- Slide elements
- Filling and bottling elements
- Cutting and chopping boards
- Gastronomy

• For mechanical engineering:

- Mechanical parts
- Paper industry

• For the chemical industry:

- Filter plates, pumps and armatures

• Mining and bulk material transportation:

- Lining of silos and bunkers
- Chutes and runways
- Transport devices for bulk material

• Sports equipment:

- Artificial floor for ice skating rinks
- Dashboards and enclosures for ice skating rinks
- Water fitness equipment

• Special programme:

- Sieves for sterilization in autoclaves
- Protective linings

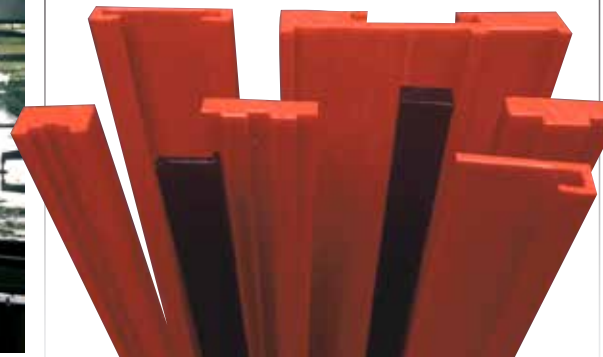
SLIDING ELEMENTS

Material properties:

- Very good sliding properties
- High impact strength
- Lowers noise levels
- Low wearing of metal parts that slide along KOTERM materials
- High resistance of KOTERM parts to abrasions
- Very high impact resistance
- Does not absorb moisture
- Resistant to chemicals and corrosion
- Environmentally friendly materials – possible regeneration of worn-out parts

Areas of use:

Conveyer lines
Canning and bottling lines
Conveyer mechanisms and equipment



• Machine components

• For the food processing industry and industrial packaging:

-Sliding elements

- Gear wheels
- Straight guides
- RAM extruded profiles
- Filling and bottling equipment
- Gastronomy

Examples of use:

- Straight chain guides (series 880TAB–881TAB, 880, 881, 882 TAB)
- Corner chain guides (two-part series 882TAB, and three-part series S881–SS881–D880–LF88)
- Shoe heels
- Magnetic lower corner parts
- Chain guides (DIN 8187)
- Wedge-shaped guiding strips
- Round belt guiding strips
- Chain guides (DIN 766)
- Sliding belts and profiles
- Sprockets

FILLING AND BOTTLING ELEMENTS

Material properties:

- Very good sliding properties
- High impact strength
- Reduction of noise levels
- Low wear of metal parts sliding along KOTERM materials
- High resistance to wearing of KOTERM materials
- Very high resistance to impacts
- Does not absorb moisture
- Resistant to chemicals and corrosion
- Environmentally friendly materials
 - possible regeneration of worn-out parts

Examples of use:

Worms
Stars
Curves
Turner
Sprockets

Areas of use:

Canning and bottling lines
Transport



• Machine components

• For the food processing industry and industrial packaging:

-Sliding elements

- Gear wheels
- Straight guides
- RAM extruded profiles

- Filling and bottling equipment

- Gastronomy



GASTRONOMY

Material properties:

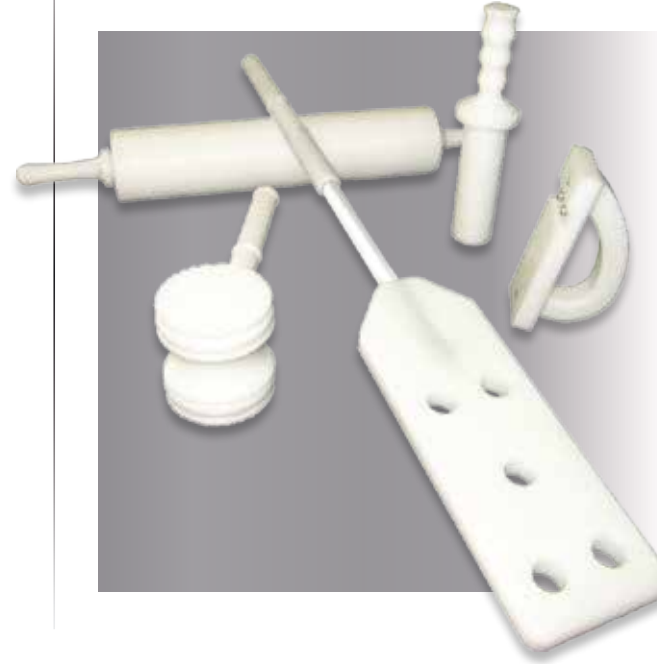
- Physiologically innocuous material PE500 (in compliance with FDA standards)
- Easy cleaning
- Highly resistant to notching
- Highly resistant to chemicals and corrosion
- Does not absorb moisture
- Good impact strength
- Possesses very good processing properties
- Low coefficient of friction
- Very good electric specific resistance and dielectric strength
- Puncture-resistant

Material:

KOTERM® PE500 (PE HMW)
High molecular weight polyethylene

Areas of use:

Food processing industry
Bakeries
Households
Slaughterhouses



Examples of use:

Kitchen counters
Cutting boards
Butcher blocks
Graters
Ladles
Meat hammers
Rolling pins
Pushers

Butcher counters
Knife handles
Transport models
Conveying elements
Protective linings in cooling chambers
Refrigerator shelves
Refrigerator doors
Cheese, fish and ham moulds

• Machine components

• For the food processing industry and industrial packaging:

-Sliding elements

- Gear wheels
- Straight guides
- RAM extruded profiles

- Filling and bottling equipment

- Gastronomy

MECHANICAL ENGINEERING

Mechanical engineering elements are products that in most cases are produced to order and according to the plans of customers, or as autonomous technical solutions that are developed and technologically included in the customers' projects.

Materials:

KOTERM®PE 1000
 KOTERM®PE 1000 R
 KOTERM®PE 500
 KOTERM®PE HD R
 KOTERM®PPH
 PA
 POM
 PET
 PTFE

Other materials are available upon request.

Examples of use:

Gear wheels
 Sprockets
 Belts
 Belt wheels
 Belt guides
 Moulds for foundry cores and ingots
 PUR founding equipment
 Wheels

Bushings
 Bearing casings
 Sliding bushings
 Pump parts: housings, rotors...
 Transport pallets in automated lines
 Transport and bushing systems

Production of brushes
 Sieves of vibration machines
 Sorted cylinders and wire wheels
 Wire dispensers
 Concrete application nozzles



• Machine components:

• For mechanical engineering:

- Mechanical parts
- Paper industry

PAPER INDUSTRY

KOTERM elements for water extraction in the paper industry are composed of ultra-high-molecular polyethylene (4–9 million g/mol) and have a very low wear and excellent sliding properties. With additional fillers (glass balls, silicone or aluminium oxide) and through the use of modified materials, material properties are improved and durability increased, extending the lifetime of the elements. The advantage to customers is that shapes and perforations are made according to the customers' individual wishes.

Materials:

KOTERM®PE 9000
KOTERM®PE 1000
KOTERM®PE 1000 MoS₂
KOTERM®ULA
KOTERM®CER

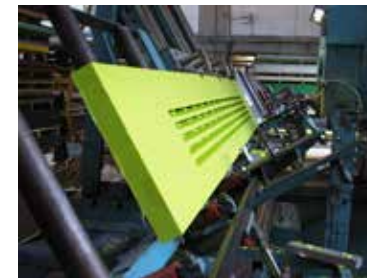
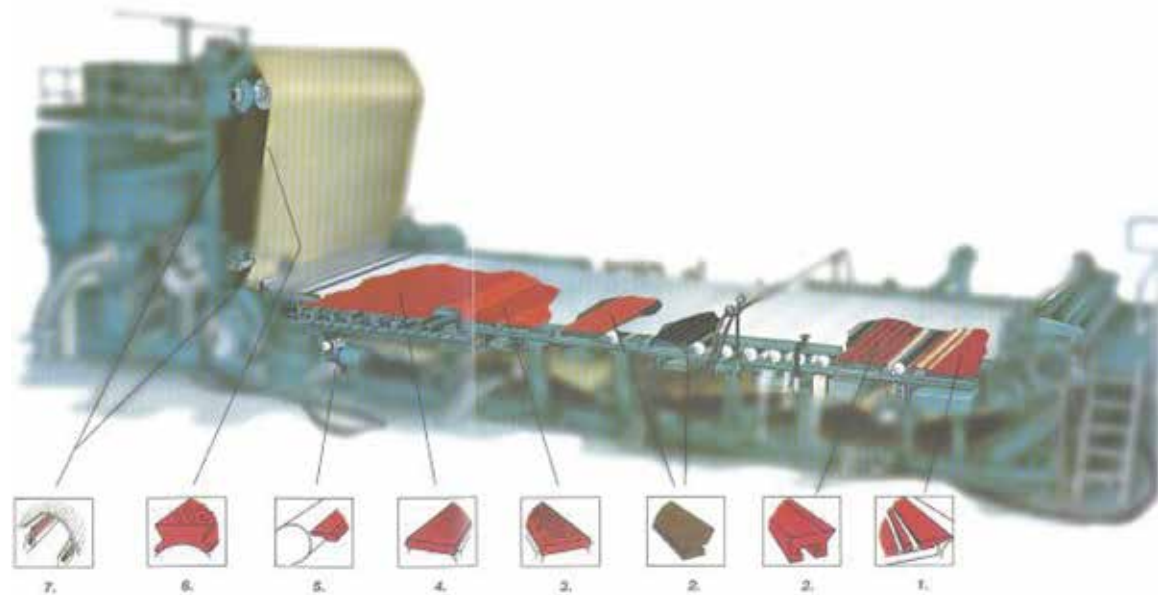
Examples of use:

FORMING TABLE: linings/strips (1)
 FOILS – DEFLECTORS: strips (2)
 WET SUCTION BOX: linings (3)
 SUCTION BOX: linings (4)
 SCRAPERS: strips (5)
 TUBULAR SUCTION BOX: linings/strips (6)
 SUCTION ROLL: sealing strips (7)
 GRATINGS

• Machine components:

• For mechanical engineering:

- Mechanical parts
- Paper industry



FILTER PLATES

Filter plates and other elements for filtration are marked by high quality and stability in operation and are made out of carefully selected materials (high-temperature stabilised homopropylene in a grey colour) pressed under high pressure and formed on modern CNC machines, aided by CAD-CAM programmes.

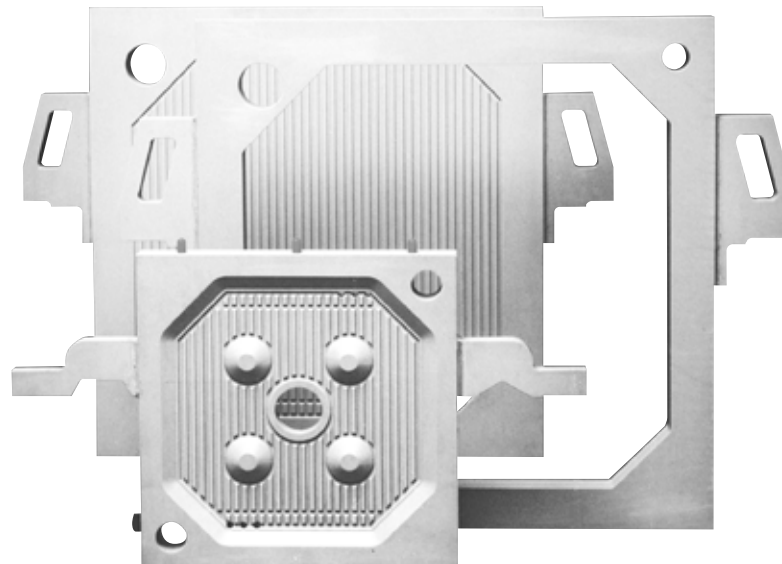
Areas of use:

- **Manufacture of colours and pigments**
Chemical intermediary products and solution purification processes
- **Ecology – environmental protection**
Municipal water and sewage, refinery waste, galvanic wastes and wastes from metal processing
- **Mining and daily surface mining**
Coal, marble, china clay, ceramics.
- **Food processing industry**
Production of various concentrates, sugar, yeast, edible oils, juices, wine

Production programme:

Chamber filter plates

- **Format:** 250, 400, 470, 500, 630, 800, 1000
- **Food processing industry:** 20, 25, 30,
Production of various concentrates, sugar, yeast, edible oils, juices, wine



• Machine components:

• For the chemical industry:

- Filter plates
- Pumps and armatures

PUMPS

Material properties:

- Very high resistance to chemicals and corrosion
- Environmentally friendly materials
- Possible regeneration of worn-out parts
- Does not absorb moisture

Materials:

Standard:

KOTERM®PE 1000

KOTERM®PE 500

KOTERM®PE HD

KOTERM®PPH

If required:

PVDF

PTFE

PVC

Other materials are available upon request

Areas of use:

Chemical industry

Paper industry

Textile industry

Water processing (neutralisation)

Leather industry

Galvanisation

Food processing industry

Ecology (cleaning apparatuses, laminating workshops)



• Machine components:

• For the chemical industry:

- Filter plates

- Pumps and armatures

MINING AND TRANSPORT

Material properties:

- Very low wear
- Very good sliding properties
- High impact strength

Additionally, the material is water resistant, does not absorb moisture, is durable under aggressive media, has a high resistance to corrosion, reduces noise, and can be also used in temperatures under 0 °C.

Materials:

KOTERM®9000,
KOTERM®PE 1000,
KOTERM®PE 1000 R,
KOTERM®PE 500,
KOTERM®FREX
KOTERM®AST



• Machine components:

• Mining and bulk material transportation

- Linings for silos, bunkers
- Chutes, runways
- Transport devices for bulk material

Areas of use:

Thermo-electric plants
Cement works
Patent fuel factories
Foundries
Ceramics industry
Mining and mineral industries – daily surface mining of brown coal
Animal feed production
Clay production
Self-loading ships
Port terminals

Examples of use:

- Silos
- Bunker material storage areas
- Gutters, chutes and drains in spillage areas of Conveyor systems
- Wagons and trains for the transport of Strewing materials
- Elevators

ARTIFICIAL FLOOR FOR ICE SKATING RINKS:

Allows for ice skating throughout the year in all weather conditions.

Suitable for events, performances and training – a special material with improved sliding properties.

Easy set-up/dismantling system for outside and inside use.

Protected patent rights.



• Machine components:

• Sports equipment

- Artificial floor for ice skating rinks
- Dashboards and enclosures for ice skating rinks
- Water fitness equipment

WATER FITNESS:

Intended for use in all types of swimming pools.

Allows for comfortable exercise in water for everyone.

Appropriate for exercise and movement.

Materials used are innocuous to bacteria in all types of pool water.

Protected patent rights.

TÜV certificate



- **Machine components:**

- **Sports equipment**

- Artificial floor for ice skating rinks
- Dashboards and enclosures for ice skating rinks

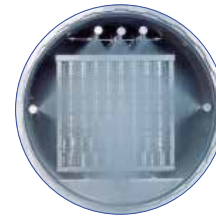
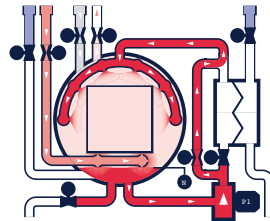
- **Water fitness equipment**

Sieves for sterilization in autoclaves:

*Especially resistant to high temperatures for the most demanding conditions of sterilisation.
Improved elastic module.
High resistance to curling at high temperatures.*

Protective linings:

*Used for protection in industry, sports facilities, hospitals, airports, etc. Highly resistant to impact.
Materials with anti-bacterial additives upon request.
Gluing of casings possible using a special preparation.*



- **Production by customer request (tailor made products)**

• Special programme:

- Sieves for sterilization in autoclaves
- Protective linings

- Sterilisation pallets in medicine
- Galvanic components



- **Production by customer request (tailor made products)**

- **Special programme:**

- Sieves for sterilization in autoclaves
- Protective linings

- Sterilisation pallets in medicine
- Galvanic components

